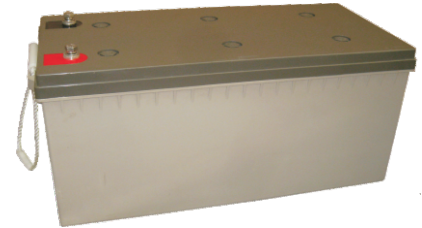


Specification

Nominal Voltage	12V	
Capacity	200.0Ah@10hr to 1.80V/cell	
Dimension	Length	522±3mm (20.55 inches)
	Width	268±3mm (10.55 inches)
	Container Height	220±3mm (8.66 inches)
	Total Height (with Terminal)	226±3mm (8.90 inches)
Approx Weight	Approx 75.9kg (166.98 lbs)	
Container Material	ABS	
Rated Capacity	200.0 AH/20.0A	(10hr, 1.80V/cell, 20°C/68°F)
	175.0 AH/35.0A	(5hr, 1.75V/cell, 20°C/68°F)
	151.2AH/50.4A	(3hr, 1.75V/cell, 20°C/68°F)
	122.2AH/122.2A	(1hr, 1.60V/cell, 20°C/68°F)
Max. Discharge Current	1600A (5s)	
Internal Resistance	Approx 4.21mΩ	
Operating Temp. Range	Discharge	-20~55°C (-4~131°F)
	Charge	0~40°C (32~104°F)
	Storage	-20~50°C (-4~122°F)
Cycle Use	Initial Charging Current less than 20.0A. Voltage 2.35V~2.40V at 20°C(68°F)Temp. Coefficient -5mV/°C	
	No limit on Initial Charging Current Voltage 2.25V~2.30V at 20°C(68°F)Temp. Coefficient -3mV/°C	
Standby Use	2.25V~2.30V at 20°C(68°F)Temp. Coefficient -3mV/°C	
Self-discharge	<3% per month @ 20°C(68°F)	



Applications

- ◆ Solar energy, wind energy
- ◆ Electric power, nuclear power
- ◆ Communication
- ◆ Ship, maritime affairs
- ◆ UPS, medical facilities and emergency lighting
- ◆ Situation with high environmental protection and energy-saving
- ◆ Better safety performance and reliability
- ◆ Designed service life of 16 years

Main Technical Advantages

- ◆ Plate: positive plate adopts tubular plate which can prevent active material falling, and adopts multi-component alloy frame. have fine corrosion-resisting performance and long service life. Negative plate adopts special radiated structure.
- ◆ Separator: adopt special micro-pore PVC-SiO₂ separator from Europe AMER-SIL Company, separator have big porosity and low resistance.
- ◆ Electrolyte: adopts Germany gas silicon dioxide, electrolyte in gel state in the battery without flowing, leakage and lamination can be avoided.
- ◆ Safety valve: adopt Germany technology, constant opening and closing, accumulator case expansion, damage and electrolyte dry up can be avoided.

Constant Current Discharge (Amperes) at 25 °C (77°F)

F.V/Time	30min	45min	1h	2h	3h	4h	5h	8h	10h	20h
1.85V/cell	127.2	109.6	93.0	59.0	45.0	37.2	32.2	22.6	19.1	10.2
1.80V/cell	142.8	119.8	102.0	63.8	48.2	39.4	33.8	23.6	20.0	10.7
1.75V/cell	153.6	129.0	108.6	67.0	50.4	41.4	35.0	24.2	20.4	10.9
1.70V/cell	164.4	135.2	114.8	69.4	52.4	42.8	36.0	24.6	20.6	11.1
1.65V/cell	172.0	140.8	118.6	71.8	54.2	43.8	36.8	25.0	21.0	11.2
1.60V/cell	178.4	144.8	122.2	74.2	55.4	44.8	37.6	25.4	21.4	11.3

Constant Power Discharge (Watts) at 25 °C (77°F)

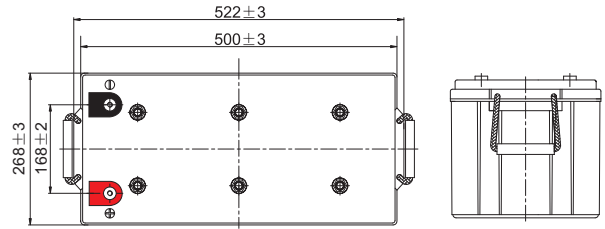
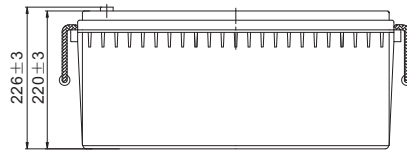
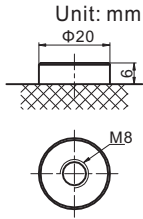
F.V/Time	30min	45min	1h	2h	3h	4h	5h	8h	10h	20h
1.85V/cell	244.8	212.6	181.0	115.2	88.0	73.2	63.4	44.8	38.2	20.4
1.80V/cell	272.6	230.4	197.6	124.2	94.0	77.4	66.4	46.8	39.8	21.4
1.75V/cell	290.6	246.6	209.2	130.0	98.4	80.8	68.8	48.0	40.6	21.8
1.70V/cell	308.2	256.4	220.0	134.0	101.6	83.2	70.4	48.8	41.0	22.0
1.65V/cell	319.2	265.4	226.0	137.8	104.8	85.0	71.8	49.4	41.6	22.2
1.60V/cell	327.8	270.8	231.6	141.8	106.6	86.6	73.2	50.2	42.2	22.4

Specifications subject to change without notice.

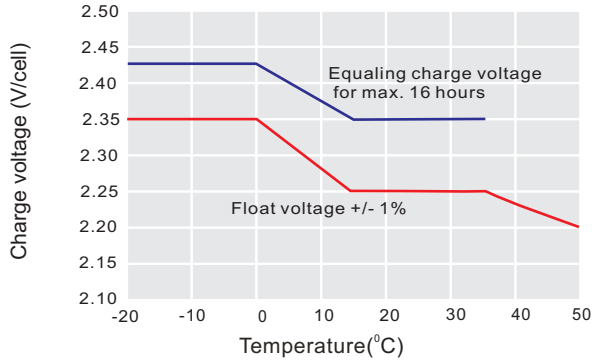


Dimensions

T11 Terminal

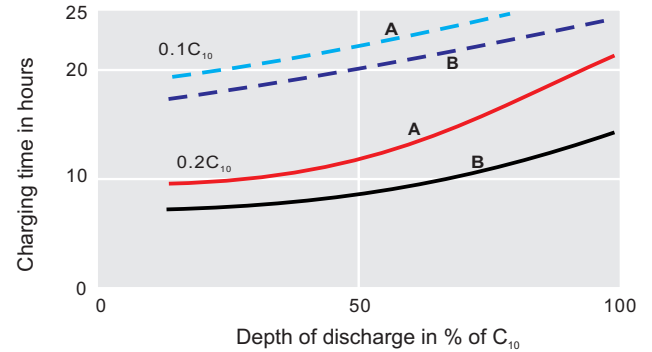


Discharge Characteristics



For continuous charging we recommend a voltage of 2.25 V. The charging voltage must be compensated to the curve for a continuously different battery ambient temperature.

Charging Characteristics



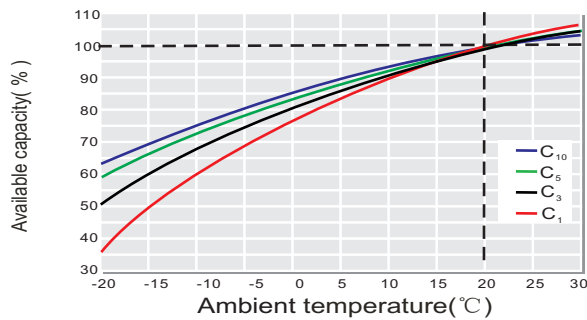
Charge voltage:

A—2.25 V/cell

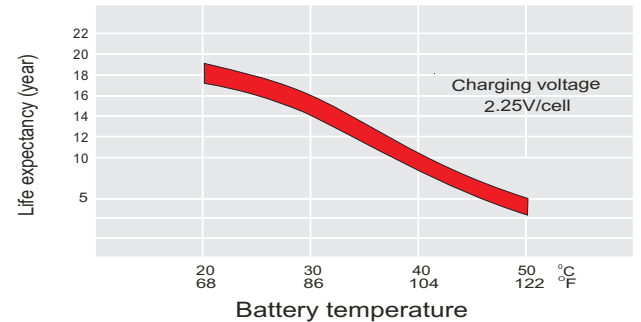
B— 2.40 V/cell

--- State of charge 100 % — State of charge 90 %

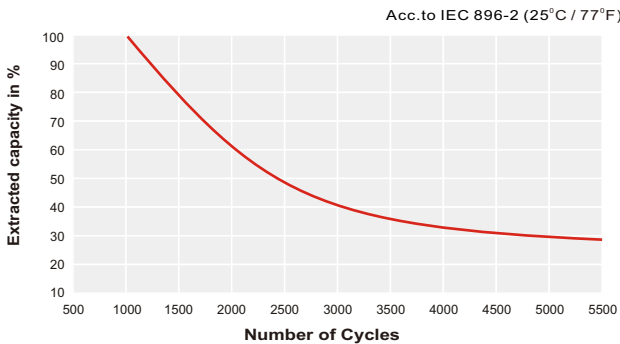
Temperature Effects in Relation to Battery Capacity



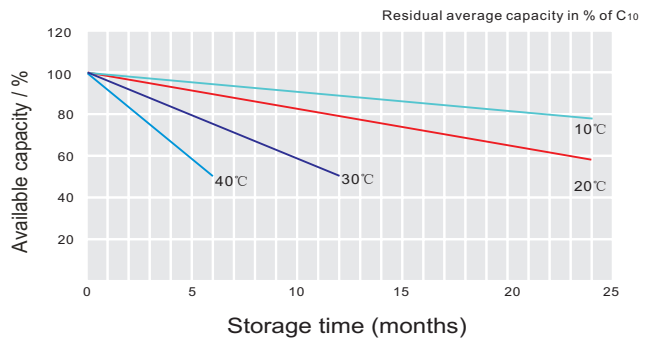
Effect of Temperature on Long Term Float Life



Cycle Life in Relation to Depth of Discharge



General Relation of Capacity VS. Storage Time



Sales Office

China sales office:

Add:5th Floor,Xinbaohui Bldg.,Nanhai Blvd,
Nanshan,Shenzhen, China. 518052
Tel: +86-755-86036060 (100 lines)
Fax: +86-755-26067269
E-mail:export@leoch.com
Http://www.leoch.com

HongKong sales office:

Add: Workshop C, 33/F, TML Tower,
No. 3 Hoi Shing Road, Tsuen Wan,
New Territories, Hong Kong
Tel: +852 35786666
Fax: +852 21170016
E-mail: sales.hk@leoch.com

Singapore sales office:

Add: NO.1 Tech Park Crescent,
Singapore 638131
Tel: +65 68416629
Fax: +65 68443210
Email sales.sg@leoch.com

North America sales office:

Add: 19751 Descartes, Unit A,
Foothill Ranch, CA 92610, USA
Tel: 949-588-5853
Fax: 949-588-5966
E-mail: sales@leoch.us
Http://www.leoch.com

Europe sales office:

Add: 9B Wheatstone Park, Waterwells
Business Park, Gloucester, GL2 2AQ.
UK United Kingdom
Tel: +44(0) 1452 729428/1452 729696
Fax: +44 (0)1452-690125
E-mail: Sales.Europe@leoch.com