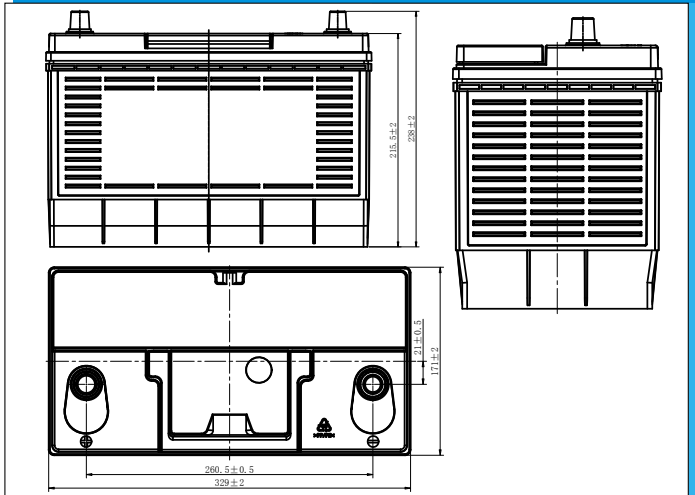




XR-2100 (12V120Ah)



Dimensions (mm)



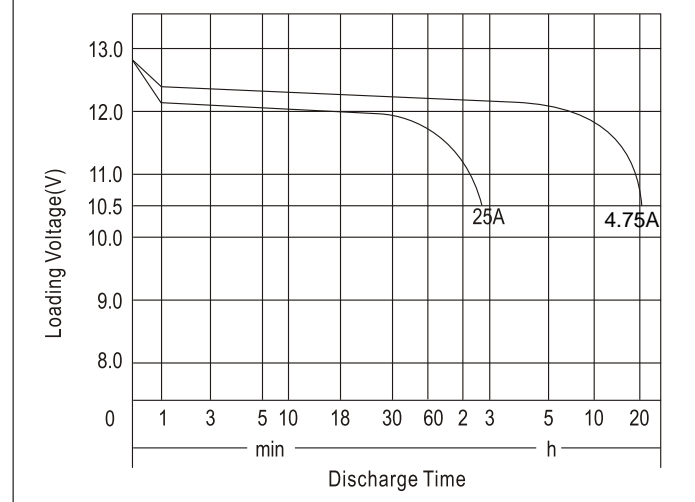
Physical Specification (mm)

Nominal Voltage		12V
Nominal Capacity(20HR)		120Ah
Dimension	Length	329±2mm(12.95inches)
	Width	171±2mm(6.73inches)
	Container Height	216±2mm(8.50inches)
	Total Height(with Terminal)	237±2mm(9.33inches)
Weight		Approx 24.6Kg(54.2lbs)
Acid		1.280 ± 0.015g/cm ³ (25°C)
Standard Terminal		5
Cell layout		1
Hold-Down		B0
Cell plate qty		/
Case		Black-PP Material
Cover		Black-PP Material
Handle		Black-Material
QTY/PLT/layer		

Electrical Specification

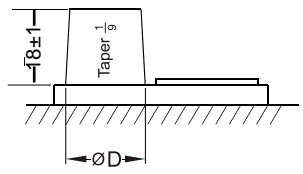
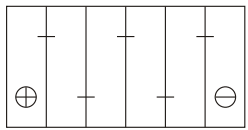
Rated Capacity	20 hour rate(5.0A)	120Ah
Reserve Capacity		179min
Cold Cranking Performance Amps@0°F(-18°C)		1050CCA

Discharge Characteristics(25°C,77°F)



Standard Terminal (mm) Cell Layout

Terminal		
Terminal Type	D	
	Positive	Negative
5	19.5 ⁰ _{-0.3}	17.9 ⁰ _{-0.3}



Figure(1)

Discharge Characteristics(-18°C,0°F)

